

A predictable pattern in renal denervation



INTRODUCING

ENLIGHTN™

MULTI-ELECTRODE RENAL DENERVATION SYSTEM

FOR THE TREATMENT OF HYPERTENSION



ST. JUDE MEDICAL™

MORE CONTROL. LESS RISK.

AN ENLIGHTENED APPROACH TO — RENAL DENERVATION —

THE ENLIGHTN™ MULTI-ELECTRODE RENAL DENERVATION SYSTEM enables cutting-edge efficiencies in procedural-based hypertension control by reducing the number of catheter manipulations needed to disrupt the sympathetic nerve network — with unparalleled speed and placement accuracy.¹⁻³ Renal denervation has been proven to effectively reduce systolic blood pressure.⁴

THE POWER OF MULTI-ELECTRODE ABLATION

■ FAST

EnligHTN administers a consistent pattern of four ablations with each placement — in 90-second intervals — potentially reducing renal denervation procedure time.^{2,3}

■ EFFICIENT

Unique multi-ablation basket design provides four ablations without readjustment.

■ PRECISE

Consistent, four-point contact with arterial wall designed to increase procedural accuracy.

■ MINIMIZED EXPOSURE

Minimal catheter repositioning may result in shorter procedure time, reduced contrast and fluoroscopic exposure.



A BREAKTHROUGH TECHNOLOGY — ON MANY POINTS

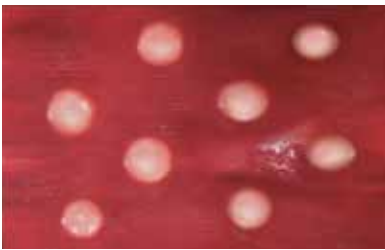
PREDICTABLE PATTERN. REPEATABLE RESULTS.

The EnligHTN renal denervation system is the first, multi-electrode ablation technology to deliver a pre-determined ablation set in a single positioning. The electrodes on the EnligHTN basket administer a repeatable pattern of evenly spaced ablations with each placement.

THE BENEFITS OF MULTI-ELECTRODE ABLATION¹⁻³

- Unique basket design reduces variability.
- Consistent placement of ablation sets enables repeatable results, minimal manipulations with the potential to save time and leave less room for error.

ENLIGHHTN MULTI-ELECTRODE ABLATION¹



Precision Pattern

SINGLE-ELECTRODE ABLATION¹



Random Pattern

THE REWARDS OF A PREDICTABLE PATTERN

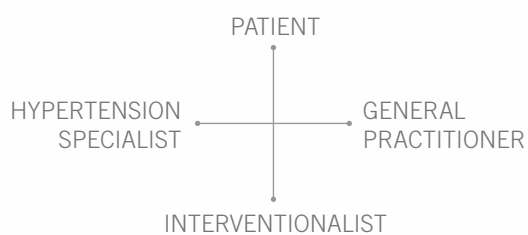
The EnligHTN system delivers a repeatable ablation pattern using four evenly spaced electrodes for fast, precise renal denervation.

- Multi-electrode basket requires minimal adjustments and may lead to a faster renal denervation procedure.
- Less procedure time may enable workflow and cost efficiencies.
- The EnligHTN RF generator uses a proprietary, temperature-controlled algorithm developed to produce transmural lesions for effective denervation.^{1,2}

HYPERTENSION AFFECTS MORE THAN ONE BILLION PEOPLE WORLDWIDE⁵

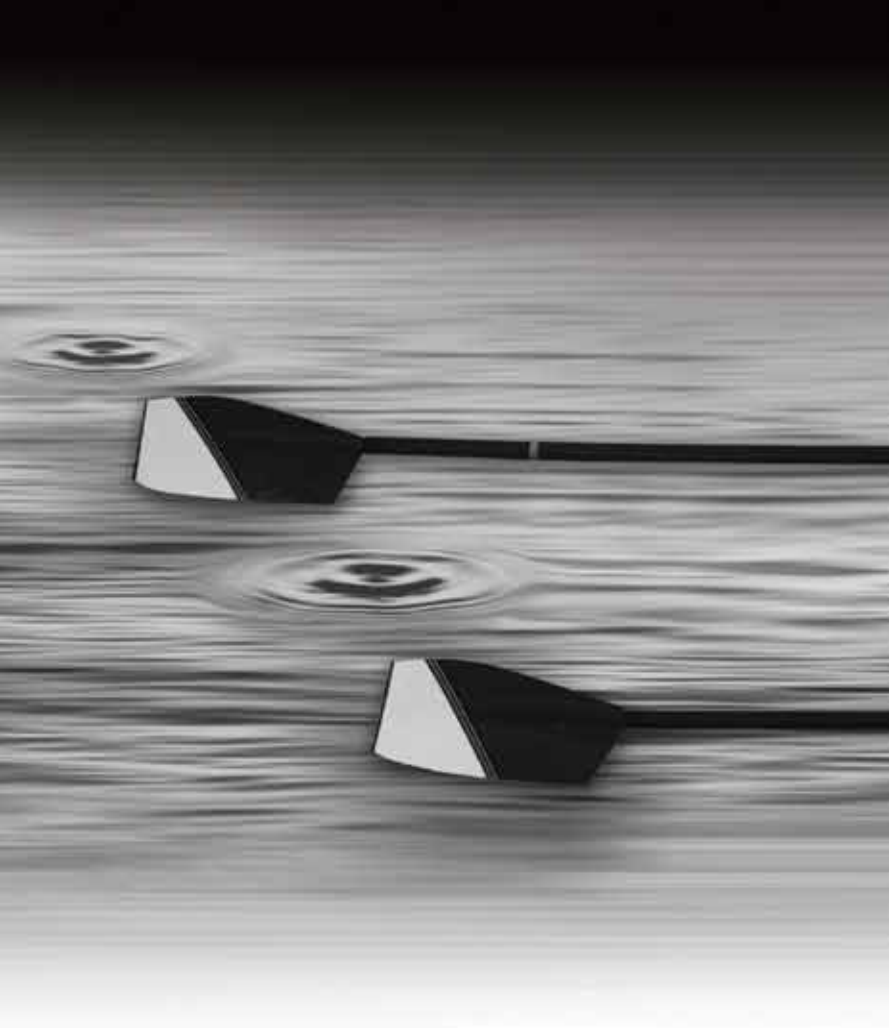
For a large subset, despite aggressive pharmacological regimens, hypertension control overall remains low.⁶

St. Jude Medical, together with dedicated professionals in the treatment continuum, can offer new solutions for hospitals and a lasting impact on our communities and health care system by advancing the technology of renal denervation and the treatment of hypertension.⁷



THE POWER OF TEAMWORK





PREDICTABLE
REPEATABLE
RELIABLE

YOUR PARTNER IN RENAL DENERVATION SOLUTIONS

The EnligHTN renal denervation system offers advanced renal artery ablation therapy. St. Jude Medical, a market leader in ablation therapy, is committed to delivering innovative technologies to improve clinical outcomes and cath lab efficiency — with a broad portfolio of practical solutions to optimize renal denervation therapy and the treatment of hypertension.

Ordering Information

EnligHTN Renal Denervation System

Reorder Number	Product Name	Description
ENL-LG-01	EnligHTN Renal Artery Ablation Catheter - large	8 F compatible, Multi-Electrode Renal Ablation Catheter; 18 mm basket length; 115 cm working length
ENL-SM-01	EnligHTN Renal Artery Ablation Catheter - small	8 F compatible, Multi-Electrode Renal Ablation Catheter; 16 mm basket length; 115 cm working length
ENL-T115	EnligHTN RF Ablation Generator	RF Ablation Generator package includes: Generator, Generator Power Cord, 1641 Connector Cable, IFU
ENL-8F55	EnligHTN Guiding Catheter	8 F Guiding Catheter with hemostatic hub and dilator; 0.088" I.D., 55 cm length; RCD-1
ENL-CC-01	EnligHTN 1641 Connector Cable	Reusable cable that connects the EnligHTN Ablation Catheter to the Generator
PREP-01	Patient Return Electrode	Patient Return Electrode used for standard electrosurgical patient preparation
ENL-PC-01	EnligHTN Power Cable	Replacement Generator Power Cord



EnligHTN Renal Artery Ablation Catheter



EnligHTN RF Ablation Generator



EnligHTN Guiding Catheter

1. St. Jude Medical. Data on file.
2. St. Jude Medical Instruction for Use, Ablation Catheter #10006654702, Generator #10006927602.
3. Medtronic Symplicity Instruction for Use.
4. Esler M, Krum H, Sobotka P, et al. Renal sympathetic denervation in patients with treatment-resistant hypertension (The Symplicity HTN-2 Trial): a randomized controlled trial. *Lancet*. 2010;376(9756):1903-9.
5. Kearney PM, Whelton M, Reynolds K, et al. Global burden of hypertension: Analysis of worldwide data. *Lancet*. 2005;365(9455):217-23.
6. Wolf-Maier, K, Cooper RS, Kramer H, et al. Hypertension treatment and control in five European countries, Canada, and the United States. *Hypertension*. 2004;43:10-17.
7. ClinicalTrials.gov #NCT01438229.

ATRIAL FIBRILLATION CARDIAC RHYTHM MANAGEMENT CARDIOVASCULAR NEUROMODULATION

Global Headquarters

One St. Jude Medical Drive
St. Paul, Minnesota 55117
USA
+1 651 756 2000
+1 651 756 3301 Fax

Cardiovascular Division

177 East County Road B
St. Paul, Minnesota 55117
USA
+1 651 756 4470
+1 651 756 4466 Fax

SJM Coordination Center BVBA

The Corporate Village
Da Vincilaan 11 Box F1
1935 Zaventem, Belgium
+32 2 774 68 11
+32 2 772 83 84 Fax

St. Jude Medical (Hong Kong) Ltd.

Suite 1608, 16/F Exchange Tower
33 Wang Chiu Road
Kowloon Bay, Kowloon
Hong Kong SAR
+852 2996 7688
+852 2956 0622 Fax

St. Jude Medical Brasil Ltda.

Rua Itapeva, 538
5º ao 8º andar
01332-000 – São Paulo – SP
Brazil
+55 11 5080 5400
+55 11 5080 5423 Fax

St. Jude Medical Japan Co., Ltd.

Shiodome City Center 15F
1-5-2, Higashi-Shinbashi
Minato-ku
Tokyo 105-7115
Japan
+81 3 6255 6370
+81 3 6255 6371 Fax

SJMenligHTN.com
SJMprofessional.com



Product referenced is approved for CE Mark.

EnligHTN, ST. JUDE MEDICAL, the nine-squares symbol and MORE CONTROL. LESS RISK. are registered and unregistered trademarks and service marks of St. Jude Medical, Inc. and its related companies.

©2012 St. Jude Medical, Inc. All rights reserved.

Item GMVASC381EN IPN 2158-12