

extra aortic

EXPANSIBLE AORTIC RING

CORONÉO



EXPANSIBLE...

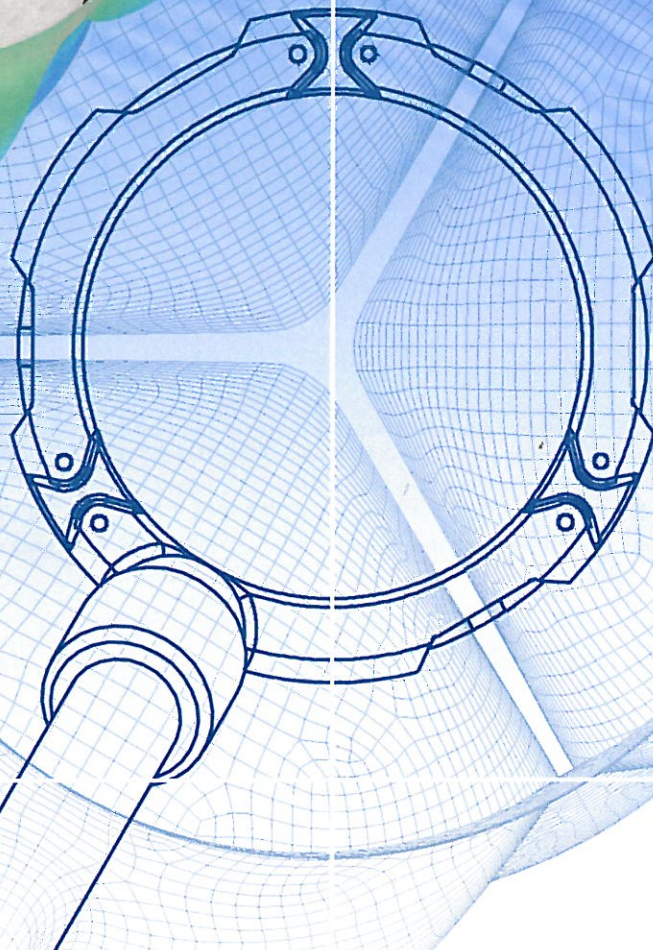
ring reduces aortic base diameter thus increasing cusp coaptation height and protecting the repair, while maintaining systolic expansibility of the aortic root

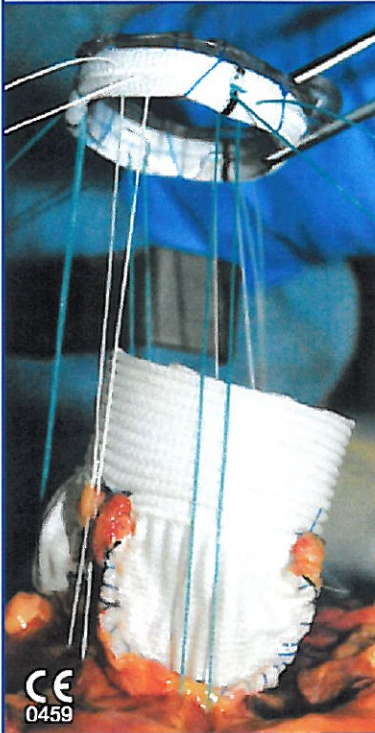
EASY TO IMPLANT...

placement of the ring external to the aortic root avoids cusp interference and facilitates implantation

STANDARDIZED CIRCUMFERENTIAL ANNULOPLASTY...

ring available in five different sizes for complete calibrated subvalvular annuloplasty





IMPLANT

Part No.	Description
1100334	23 mm Diameter - External Expansible Aortic Annuloplasty Ring
1100303	25 mm Diameter - External Expansible Aortic Annuloplasty Ring
1100304	27 mm Diameter - External Expansible Aortic Annuloplasty Ring
1100305	29 mm Diameter - External Expansible Aortic Annuloplasty Ring
1100306	31 mm Diameter - External Expansible Aortic Annuloplasty Ring

ACCESSORIES

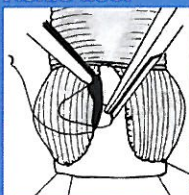
Part No.	Description
1100312	Reusable Adjustable Handle for Extra-Aortic Ring Placement



An Expansible Aortic Ring to Standardize a Physiological Approach to Aortic Valve Repair: CAVIAAR* Technique

Restoration of both root geometry and cusp coaptation are the prerequisites for a successful valve sparing procedure. Ideally, procedures should treat dilatation of the aortic annular base, while preserving dynamics of the aortic root with vortices (sinuses of Valsalva) and root expansibility (interleaflet triangles). A standardized and physiological approach to aortic valve repair is suggested by associating remodeling of the aortic root with resuspension of cusp effective height, and external subvalvular aortic ring annuloplasty.

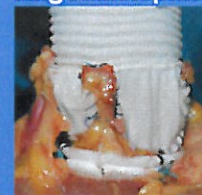
Remodeling of Aortic Root



Resuspension of Cusp Effective Height



Expansible Aortic Ring Annuloplasty



* **CAVIAAR**: Conservative Aortic Valve surgery for aortic Insufficiency and Aneurysm of the Aortic Root
All patients receiving the expansible aortic ring are included prospectively in the CAVIAAR registry

Schäfers HJ, Bierbach B, Aicher D. A new approach to the assessment of aortic cusp geometry. *J Thorac Cardiovasc Surg* 2006; 132:436-8.

Lansac E, Di Centa I, Raoux F, Bulman-Fleming N, Ranga A, Abed A, Ba M, Paolitto A, Letourneur D, Meddahi Pelle A. An Expansible Aortic Ring for a Physiological Approach to Conservative Aortic Valve Surgery. *J Thorac Cardiovasc Surg* 2009;138(3):718-24

Lansac E, Di Centa I, Sleilaty G, Bouchot O, Arnaud Crozat E, Blin D, et al. An aortic ring to standardize aortic valve repair: preliminary results of a prospective multicentric cohort of 144 patients. *Eur J CardioThorac Surg* 2010, 38:147-54.

Lansac E, Di Centa I, Sleilaty G, Arnaud Crozat E, Bouchot O; Hacini R; Blin D, et al. An aortic ring: from a physiological reconstruction of the root to a standardized approach of aortic valve repair. *J Thorac Cardiovasc Surg* 2010 (in press)

The device illustrated in this publication may not represent the only solution available for the treatment of aortic valve disease. CORONÉO relies on the medical judgement and know-how of the properly licensed medical practitioner to select the appropriate device for the cardiac surgical procedure to be undertaken on the aortic valve. Refer to the Instructions for Use packaged with each Extra-Aortic Annuloplasty Ring for full prescribing information, including a listing of the device indications, warnings and precautions.

2010 CORONÉO Inc., All Rights Reserved

Manufactured in CANADA by:

CORONÉO

CORONÉO, INC.

9250 Avenue du Parc, Suite 514
Montreal, Quebec, H2N 1Z2, CANADA
www.coroneo.com

Tel. : (514) 336-9230 Fax : (514) 334-9778

Distributed by:

Not available for sale in the United States