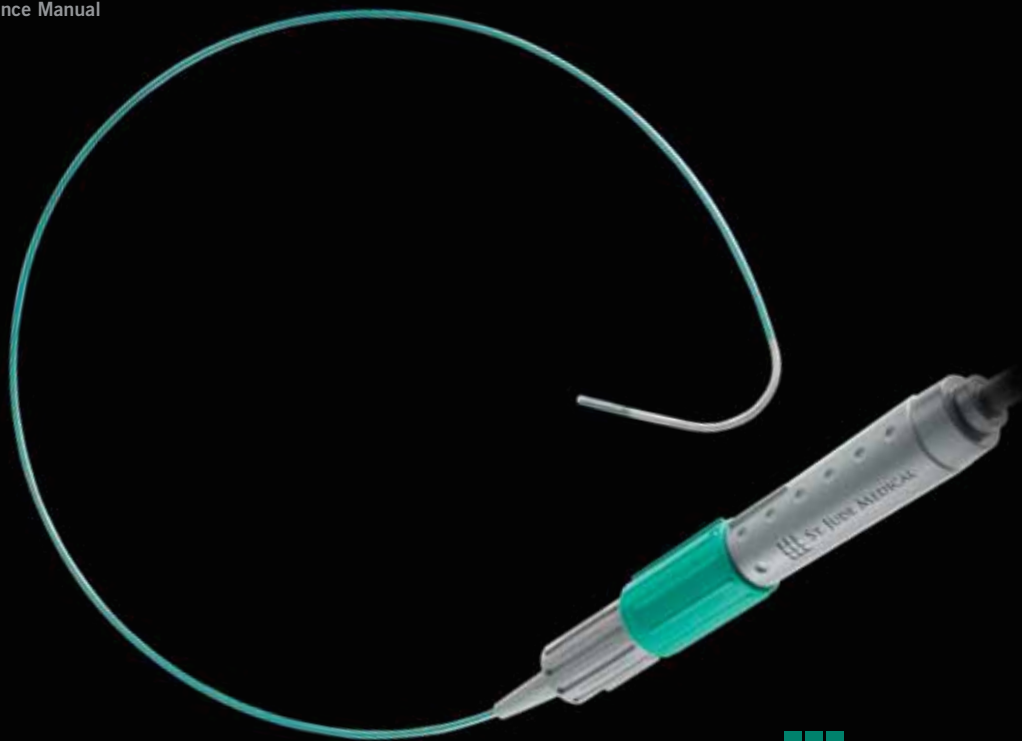


ViewFlex™ Xtra ICE Catheter

Positioning Reference Manual



ST. JUDE MEDICAL™

MORE CONTROL. LESS RISK.

ViewFlex™ Xtra ICE Catheter

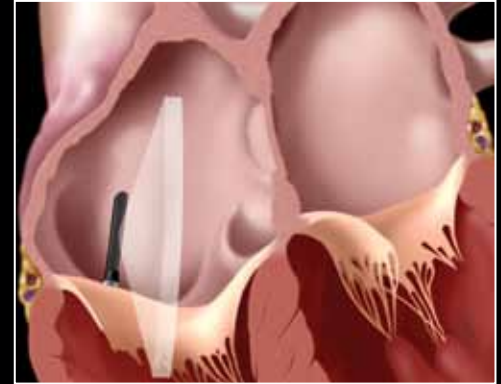
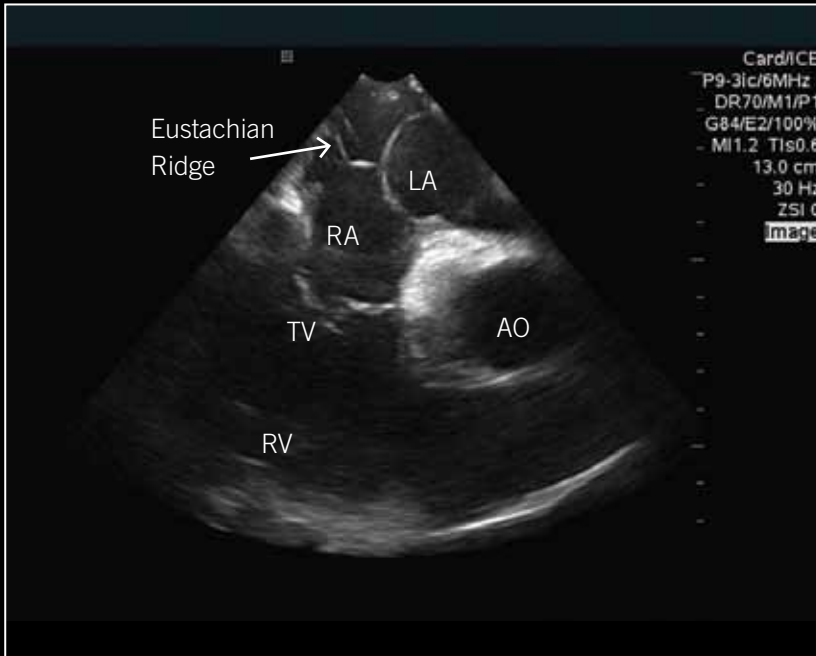
The ViewFlex Xtra ICE Catheter, which is compatible with the ViewMate™ Z and ViewMate™ II ultrasound consoles, provides visualization of cardiac structures and blood flow within the heart during electrophysiology and interventional cardiology procedures. This “Positioning Reference Manual” can be used as a guide to understanding the technique of ICE imaging. The diagrams and ultrasound images represented in the following text display the approximate cardiac anatomy seen during a typical ICE overview of the heart. Precise movements in catheter angulations and rotations, for a specific view, may differ with individual cardiac anatomy.

Index

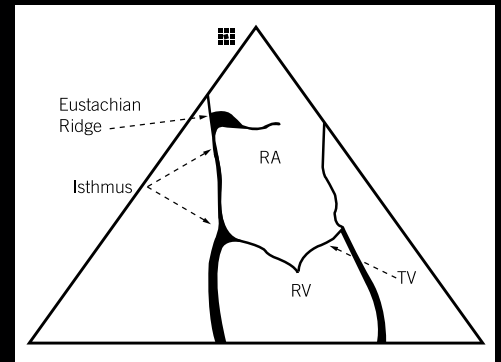
1. Eustachian Ridge
2. Home View
3. Aorta, Right Ventricular Outflow Tract
4. Coronary Sinus
5. Intra-Atrial Septum, Fossa Ovalis
6. Mitral Valve, Left Atrial Appendage
7. Left Pulmonary Veins
8. Right Pulmonary Veins
9. Superior Vena Cava, Right Atrium
10. Left Ventricle Long Axis

Eustachian Ridge

- As the ICE catheter enters the right atrium, the eustachian ridge is the first anatomical structure that can be visualized.

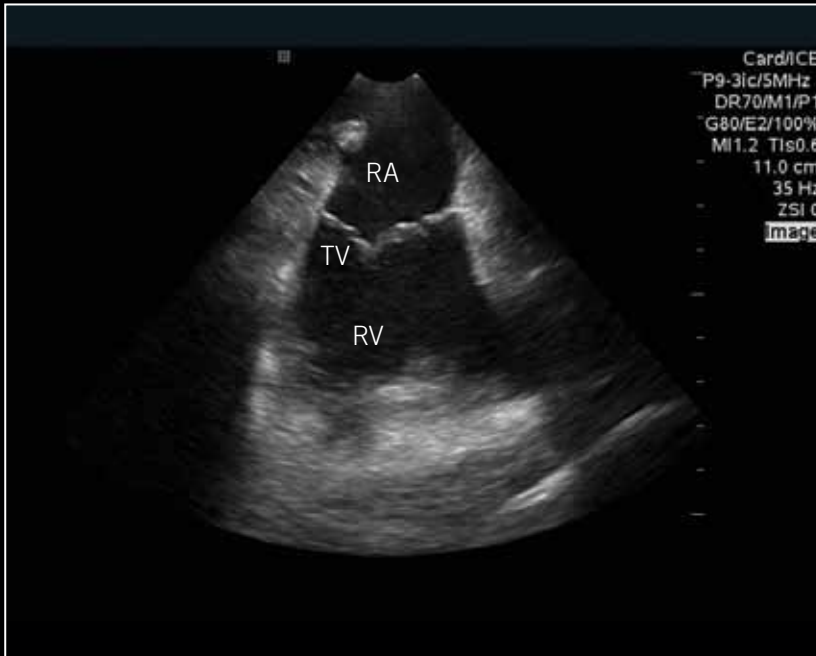


Orientation

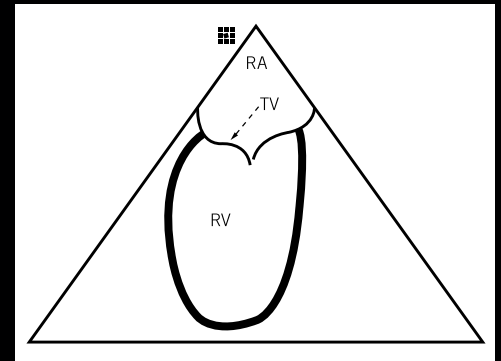


Home View

- Continue advancing the catheter to the level of the mid-right atrium
- The ultrasound array should be facing anteriorly
- There is no flexion on the catheter

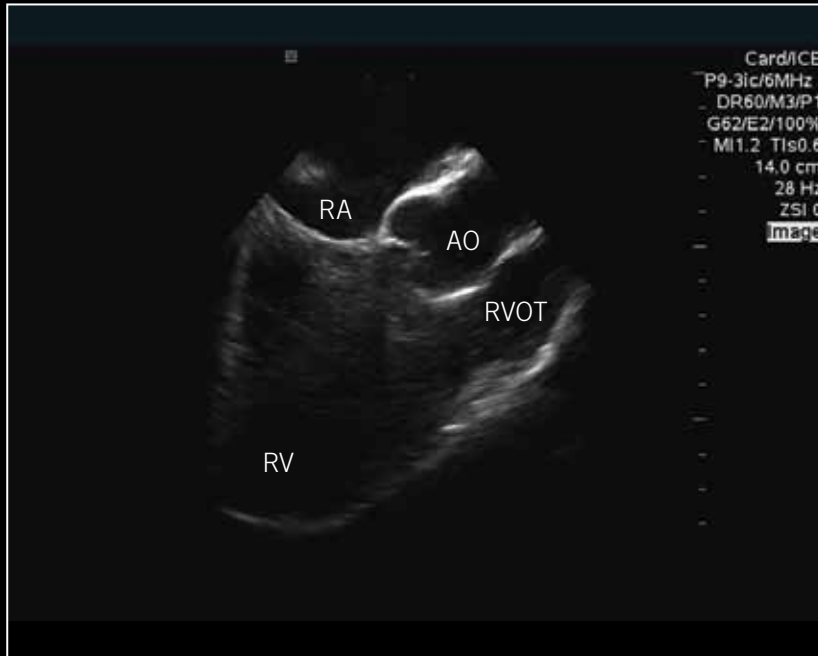


Orientation

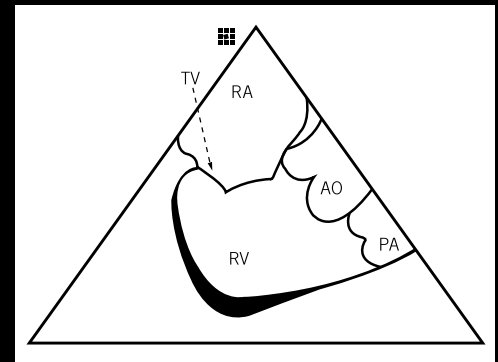


Aorta, Right Ventricular Outflow Tract

- From the “Home View,” rotate the catheter clockwise
- No flexion on the catheter is necessary

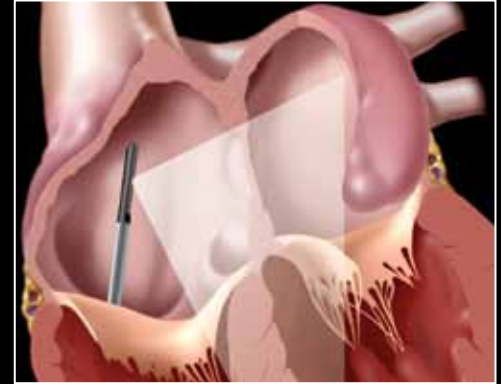
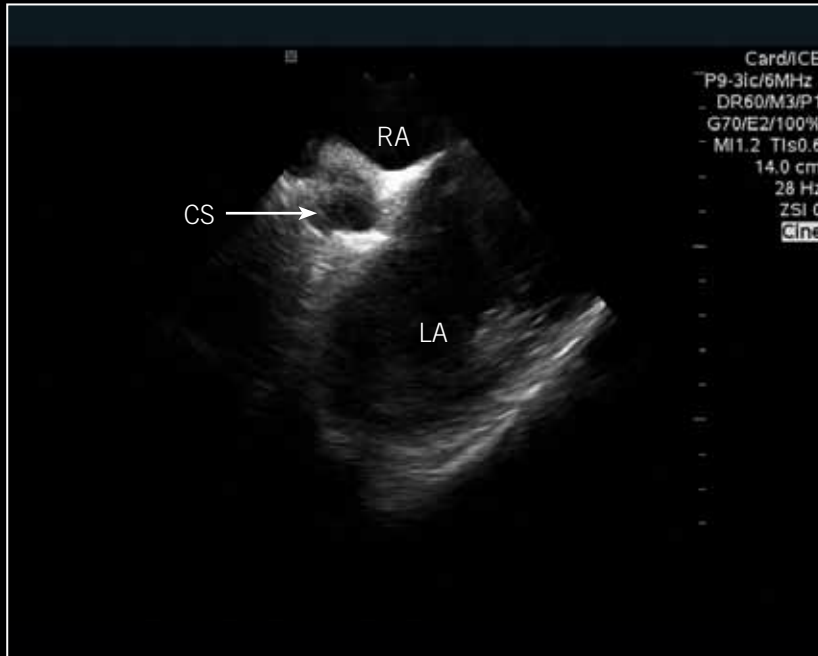


Orientation

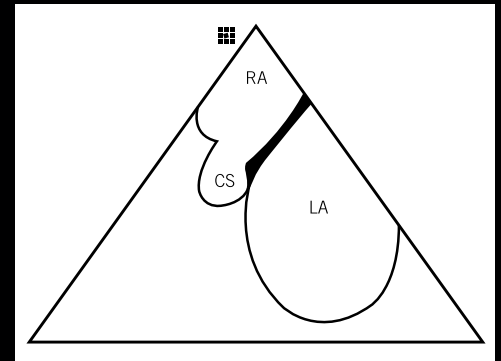


Coronary Sinus

- Gradually rotate the catheter clockwise to visualize the ostium of the coronary sinus

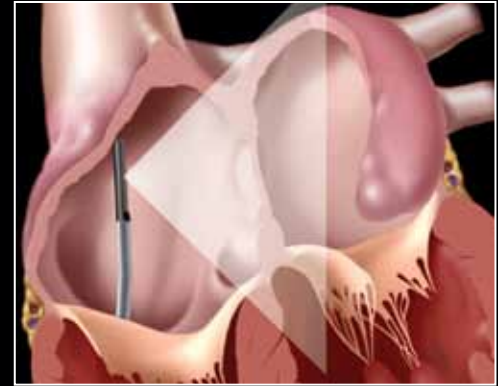
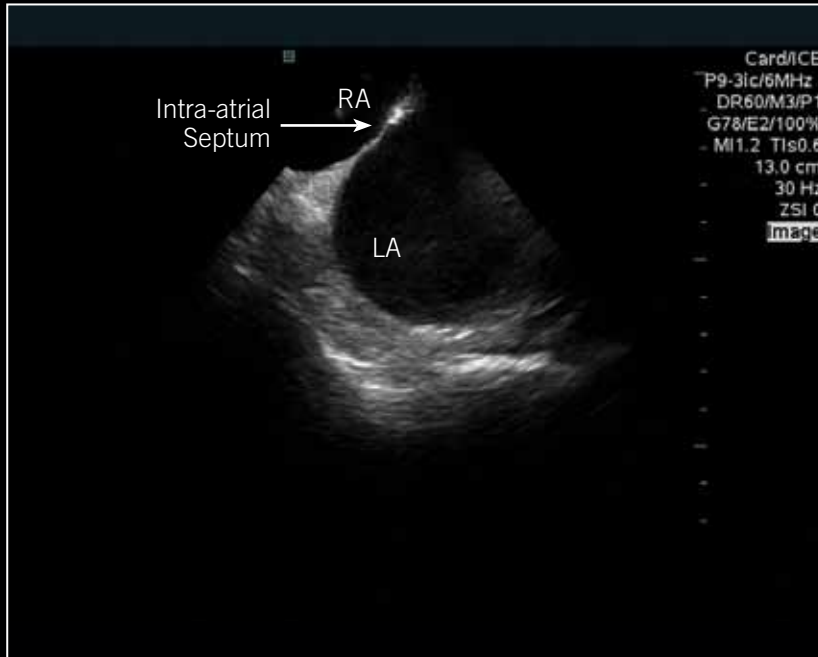


Orientation

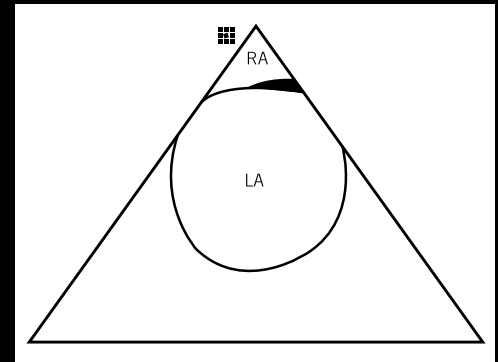


Intra-atrial Septum, Fossa Ovalis

- Rotate the catheter clockwise
- Posterior flexion can be used if necessary to view more of the right atrium

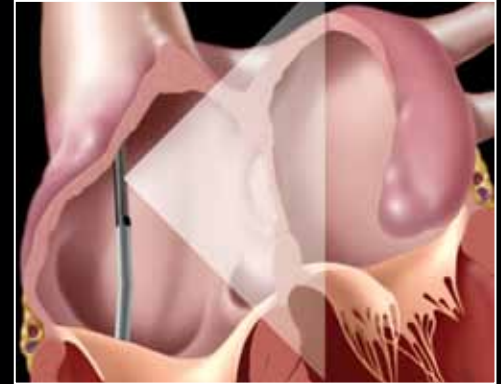
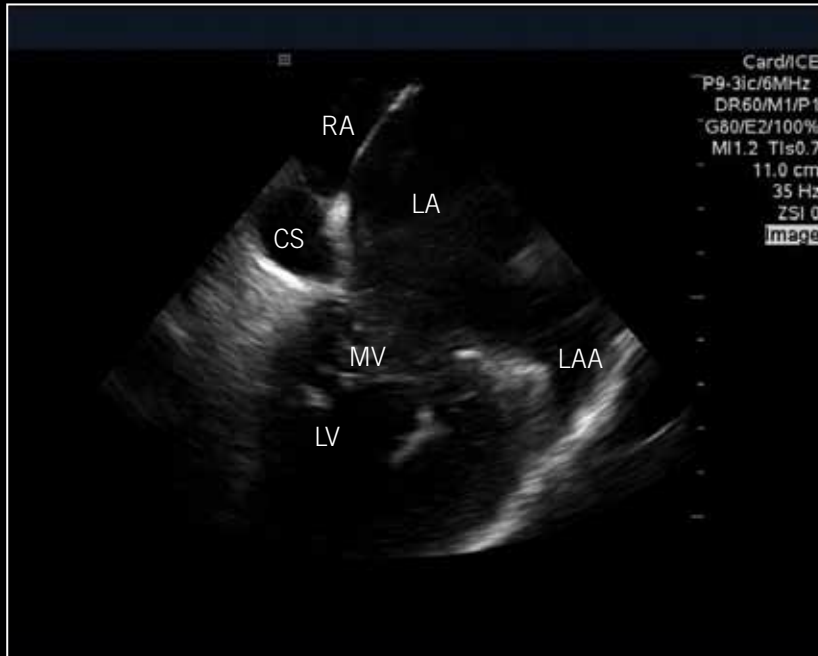


Orientation

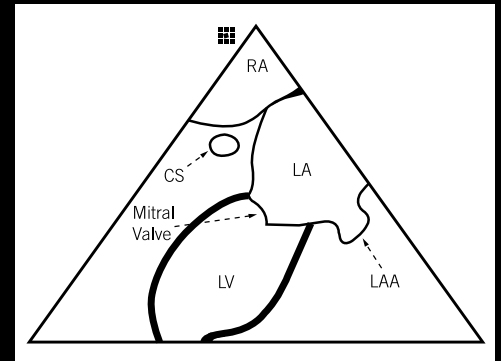


Mitral Valve, Left Atrial Appendage

- From the “Intra-atrial Septum View,” gradually rotate the catheter clockwise

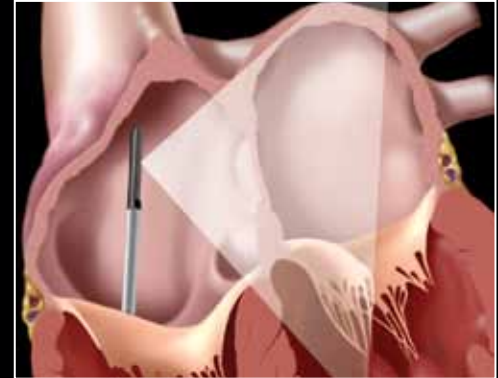


Orientation

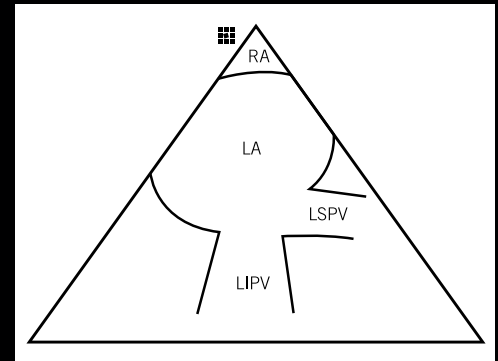


Left Pulmonary Veins

- From the “Left Atrial Appendage View,” remove the posterior flexion applied to the catheter
- Slightly rotate the catheter clockwise
- Color Doppler can be used to identify the left pulmonary veins

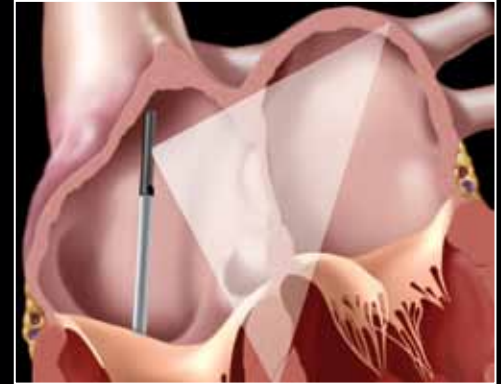
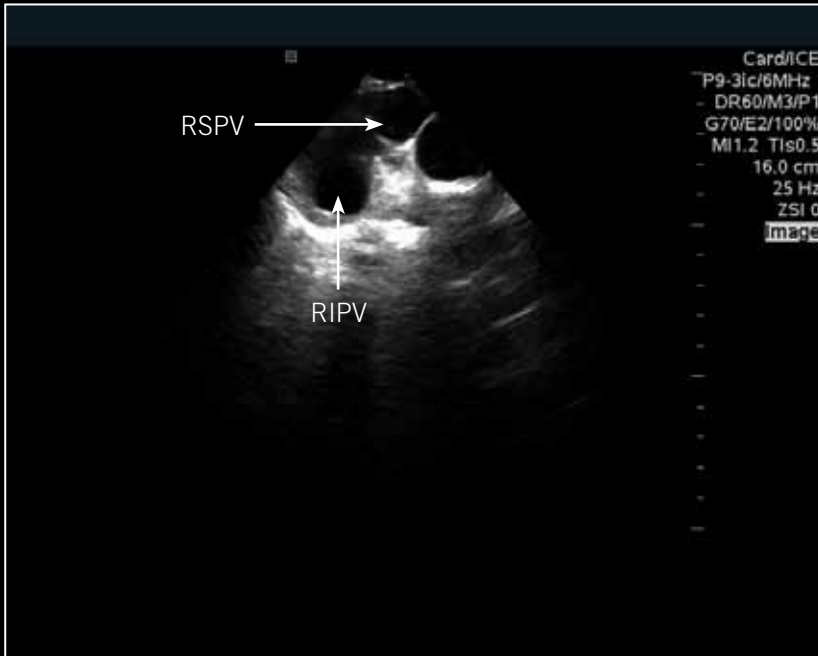


Orientation

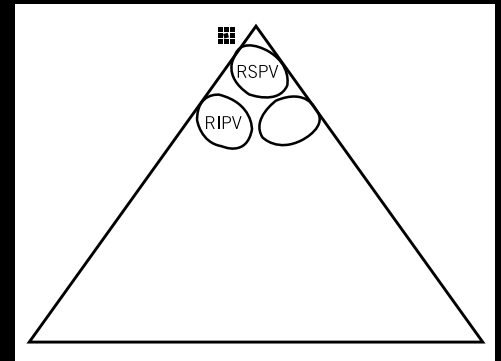


Right Pulmonary Veins

- Rotate the catheter clockwise past the left pulmonary veins
- Advance the catheter slightly to obtain a better view of the right pulmonary veins

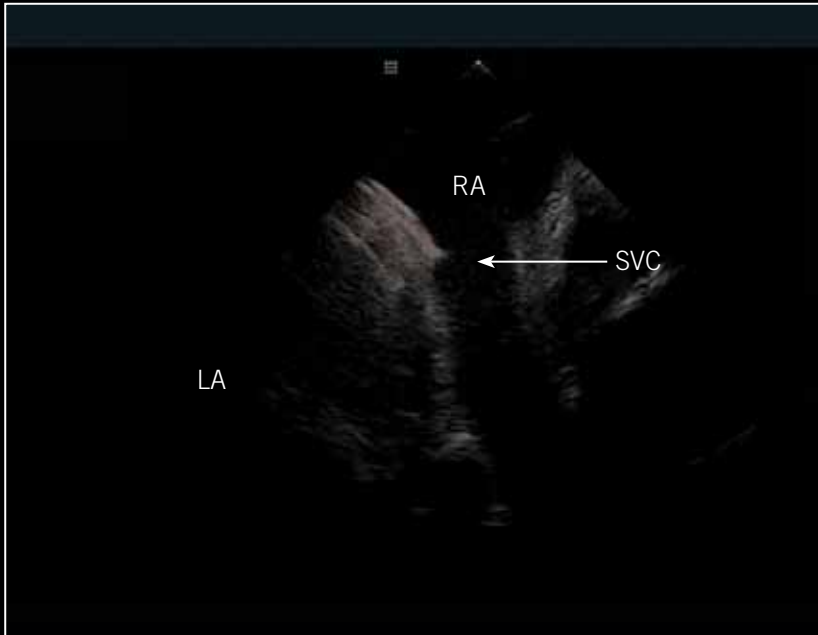


Orientation

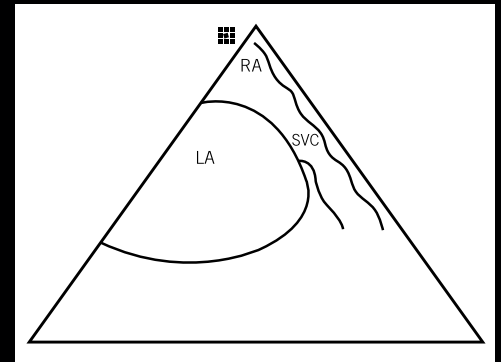


Superior Vena Cava, Right Atrium

- Place the catheter in the mid-right atrium
- Flex the catheter posteriorly
- If necessary, rotate the catheter counter-clockwise to obtain a better view of the superior vena cava and right atrium

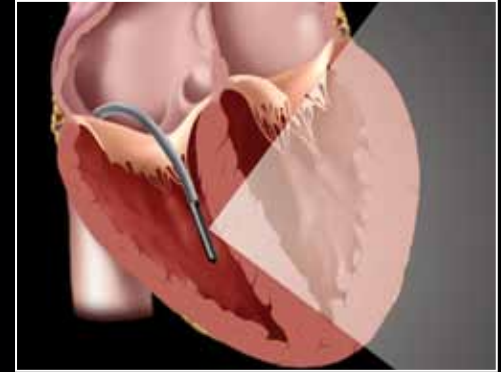
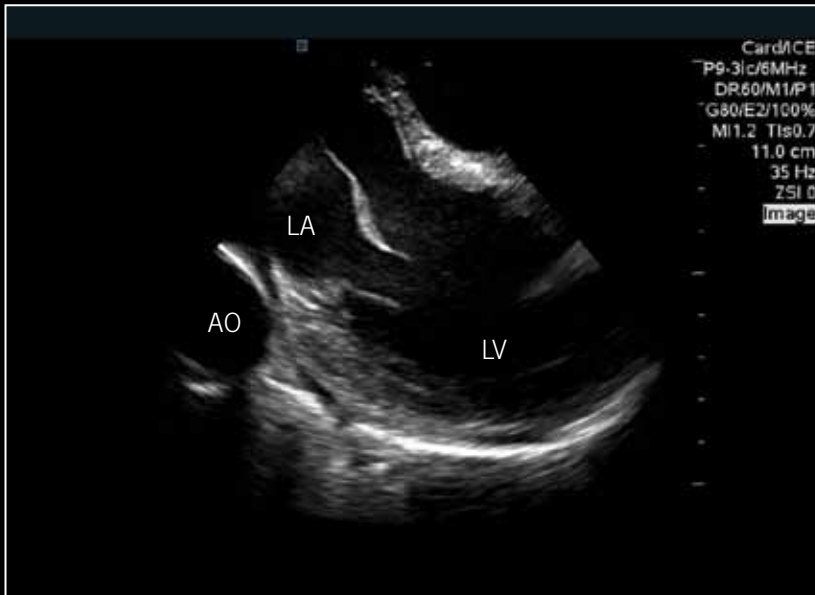


Orientation

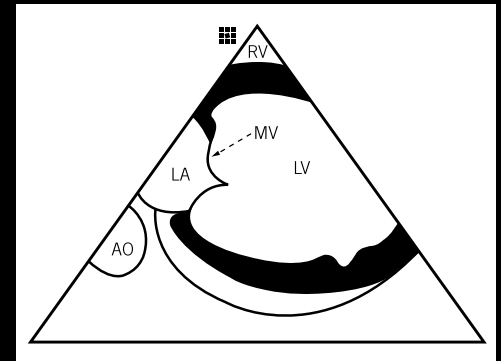


Left Ventricle Long Axis

- Re-establish Home View
- Once the tricuspid valve is clearly visible, flex the catheter anteriorly (toward tricuspid valve)
- Utilizing fluoroscopy and ultrasound advance the catheter past the tricuspid valve annulus into the right ventricle and then remove anterior flexion
- Rotate the catheter clockwise until the intraventricular septum comes into view



Orientation



ATRIAL FIBRILLATION

CARDIAC RHYTHM MANAGEMENT

CARDIOVASCULAR

NEUROMODULATION

Global Headquarters

One St. Jude Medical Drive
St. Paul, Minnesota 55117
USA
+1 651 756 2000
+1 651 756 3301 Fax

Atrial Fibrillation Division

One St. Jude Medical Drive
St. Paul, Minnesota 55117
USA
+1 651 756 2000
+1 651 756 3301 Fax

SJM Coordination Center BVBA

The Corporate Village
Da Vincilaan 11 Box F1
1935 Zaventem
Belgium
+32 2 774 68 11
+32 2 772 83 84 Fax

St. Jude Medical Brasil Ltda.

Rua Itapeva, 538
5º ao 8º andar
01332-000 – São Paulo – SP
Brazil
+55 11 5080 5400
+55 11 5080 5423 Fax

St. Jude Medical (Hong Kong) Ltd

Suite 1608, 16/F Exchange Tower
33 Wang Chiu Road
Kowloon Bay, Kowloon
Hong Kong SAR
+852 2996 7688
+852 2956 0622 Fax

St. Jude Medical Japan Co., Ltd.

Shiodome City Center 15F
1-5-2, Higashi-Shinbashi
Minato-ku, Tokyo 105-7115
Japan
Tel: +81 3 6255 6370
Fax: +81 3 6255 6371

St. Jude Medical Australia Pty Ltd.

17 Orion Road
Lane Cove NSW 2066
Australia
+61 2 9936 1200
+61 2 9936 1222 Fax

SJMprofessional.com



Rx Only

Brief Summary: Please review the Instructions for Use prior to using these devices for a complete listing of indications, contraindications, warnings, precautions, potential adverse events, and directions for use.

ViewMate Z, ViewMate II, ViewFlex, ST. JUDE MEDICAL, the nine-squares symbol and MORE CONTROL. LESS RISK. are trademarks and service marks of St. Jude Medical, Inc. and its related companies. ©2012 St. Jude Medical. All Rights Reserved.

Item 100057675EN Rev A



ST. JUDE MEDICAL™

MORE CONTROL. LESS RISK.