

INTRODUCING
QUANTIEN™

Integrated FFR Platform

FREE YOUR CATH LAB WITH WIRELESS FFR



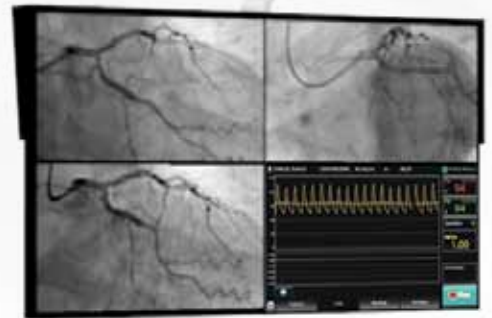
ST. JUDE MEDICAL™
MORE CONTROL. LESS RISK.

QUANTIEN

FREE YOUR CATH LAB WITH WIRELESS

Free from Cables

The QUANTIEN integrated FFR solution gives you a wireless patient environment, removing the clutter of cables and clearing the table for what's most important — the patient.



FFR screen on existing monitors

Free Up Your Time

With QUANTIEN, FFR is always available when and where you want it, without time-consuming setup or connecting of cables. Patient ID is quickly loaded from your hospital scheduling system, and the results are exported back to your archive, all with a minimum of manual interaction.



Wi-Box™
Wireless AO Interface



Perfect Touch Display

All features at your fingertips through the latest touch-screen technology and a high-resolution widescreen.



Full Connectivity

Quick and easy procedures and full case documentation with DICOM worklist, DICOM archive and USB memory stick data export.

FFR



PressureWire™ Aeris™

QUANTIEN
main unit

Free Your Table

The wireless design of the QUANTIEN integrated FFR solution allows you to tailor your cath lab environment exactly the way you like. Place the QUANTIEN main unit anywhere in the lab, freeing up valuable table space and allowing control by either sterile or nonsterile-dressed staff.

Regardless of where you chose to place QUANTIEN, its video screen can be displayed on existing lab monitors for convenient viewing right next to your angiography and hemodynamic screens.

Free from Time-Consuming Installation

Integrating QUANTIEN into your cath lab environment is quick and easy — no need to install cables through the floor or ceiling. QUANTIEN lets you go wireless without taking down the lab.



Secure Wireless

Fast, robust and secure wireless communication using advanced radio technology from St. Jude Medical. Well proven in cath labs around the world.



PressureWire

The Quantien integrated FFR platform is compatible with PressureWire Certus™ and PressureWire Aeris from St. Jude Medical.

WIRELESS FFR. LIGHT YEARS AHEAD



Solutions for
PCI Optimization

PressureWire™
Receiver



QUANTIEN™



FFR

ILUMIEN™



FFR + OCT

Guided Procedures




The interface displays three sequential steps for a procedure:

- Step 1/3:** Position AQ transducer at heart level. Open AQ transducer to air. Press **Zero Pa.** (Button: Zero Pa)
- Step 2/3:** Place packaging coil flat and flush with saline. Press **Connect Wireless** or **Insert PW connector.** (Button: Connect Wireless)
- Step 3/3:** Advance PressureWire until sensor element is just outside catheter tip. Press **Equalize.** (Button: Equalize)

Intuitive and illustrated on-screen guide to lead the user through the case step by step.

Multivessel FFR Made Easy




The interface shows two columns for selection:

| Vessel | Step |
|------------|----------|
| None | None |
| RCA Prox | Pre PCI |
| RCA Mid | Post PCI |
| RCA Distal | |

Simplified live case documentation with vessel and procedure step annotation.

Get Your Data in Seconds



The interface shows export options:

- To Network Path
- To DICOM Archive
- Internal
- Spreadsheet
- Bitmap

Fast and easy data export via USB memory stick or network.

Our Claim to FAME and FAME 2

FAME

Compared to angiography alone, FFR¹:

- Allows more accurate identification of hemodynamically relevant stenoses, reducing rates of death, myocardial infarction and repeat revascularization¹
- Improves outcomes and patient quality of life
- Lowers procedure-related costs
- No increase in procedure time
- Decreases the amount of contrast agent used

FAME 2

FFR-guided PCI using PressureWire is a cost-effective strategy that improves outcomes and quality of life compared to medical therapy alone.²⁻³

- 86% relative reduction in the risk for ACS requiring unplanned hospital readmission with urgent revascularization
- Greater relief of angina
- Cost-effectiveness – ICER of \$32,000 per QALY

Ordering Information

| Model / Reorder Number | Product |
|------------------------|------------------------|
| C12787 | QUANTIEN FFR Plattform |
| C12797 | QUANTIEN Desktop stand |
| C12798 | QUANTIEN Pole bracket |
| C12799 | QUANTIEN Wall mount |
| C12783 | Wi-Box |

Note: To fasten QUANTIEN bedside with no bedside mounted pole available, order Multipurpose Bracket C12777 and C12798 Pole Bracket.

1. Tonino PA, De Bruyne B, Pijls NH, et al. Fractional flow reserve versus angiography for guiding percutaneous coronary intervention. FAME study. *N Engl J Med.* 2009;360(3):213-24.
2. De Bruyne B, Pijls N, Kalesan B, et al. Fractional flow reserve-guided PCI versus medical therapy in stable coronary disease. *N Engl J Med.* 2012;367(11):991-1001.
3. Fearon WF. FAME 2 Cost-effectiveness: A Prospective, Randomized Trial Evaluating the Cost-effectiveness of FFR-Guided PCI in Patients with Stable Coronary Artery Disease Presented at Late Breaking Clinical Trials 1 at TCT 2012, Miami, Florida, October 24, 2012.

ATRIAL FIBRILLATION

CARDIAC RHYTHM MANAGEMENT

CARDIOVASCULAR

NEUROMODULATION

Global Headquarters

One St. Jude Medical Drive
St. Paul, Minnesota 55117
USA
+1 651 756 2000
+1 651 756 3301 Fax

Cardiovascular Division

177 East County Road B
St. Paul, Minnesota 55117
USA
+1 651 756 4470
+1 651 756 4466 Fax

St. Jude Medical Systems AB

Box 6350
SE-751 35 Uppsala
Sweden
+46 18 161000
+46 18 161099 Fax

SJM Coordination Center BVBA

The Corporate Village
Da Vincilaan 11 Box F1
1935 Zaventem, Belgium
+32 2 774 68 11
+32 2 772 83 84 Fax

St. Jude Medical Japan Co., Ltd.

Shiodome City Center 15F
1-5-2, Higashi-Shinbashi, Minato-ku
Tokyo 105-7115
Japan
+81 3 6255 6370
+81 3 6255 6371 Fax

St. Jude Medical (Hong Kong) Ltd.

Suite 1608, 16/F Exchange Tower
33 Wang Chiu Road
Kowloon Bay, Kowloon
Hong Kong SAR
+852 2996 7688
+852 2956 0622 Fax

St. Jude Medical Brasil Ltda.

Rua Itapeva, 538
5º ao 8º andar
01332-000 – São Paulo (SP)
Brazil
+55 11 5080 5400
+55 11 5080 5423 Fax

St. Jude Medical Australia Pty. Ltd.

17 Orion Road
Lane Cove, NSW 2066
Australia
+61 2 9936 1200
+61 2 9936 1222 Fax

SJMprofessional.com
SJMknowledgecenter.com



Product referenced is approved for CE Mark.

Not available for sale in the U.S. Devices depicted may not be available in all countries. Check with your St. Jude Medical representative for product availability in your country.

Please review the Instructions for Use prior to using these devices for a complete listing of indications, contraindications, warnings, precautions, potential adverse events and directions for use.

QUANTIEN, PressureWire Aeris, PressureWire Certus and Wi-Box are designed, developed and manufactured by St. Jude Medical Systems AB. QUANTIEN, ILUMIEN, PRESSUREWIRE, AERIS, CERTUS, WI-BOX, RADI, ST. JUDE MEDICAL, the nine-squares symbol and MORE CONTROL. LESS RISK. are registered and unregistered trademarks and service marks of St. Jude Medical, Inc. and its related companies.
©2012 St. Jude Medical, Inc. All rights reserved.

GMVASC471EN IPN 2342-12

